

## FIRST FLOOR PLAN

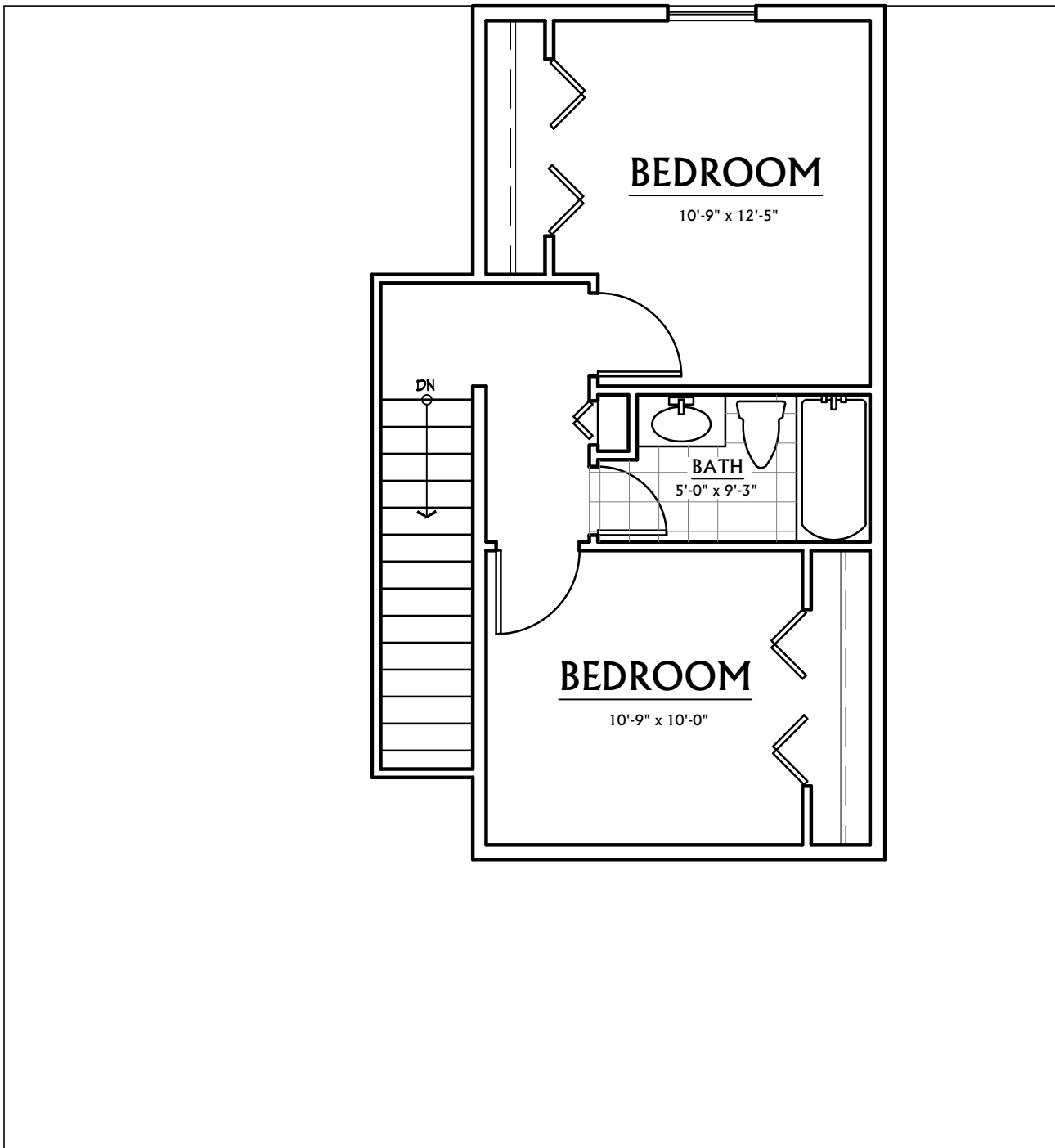
SCALE:  $\frac{3}{16}$ " = 1'-0"

921 SQ. FT. First Floor  
1385 SQ. FT. TOTAL



THE HIGGINS

THREE OAKS COMMUNITIES



## SECOND FLOOR PLAN

SCALE:  $\frac{3}{16}$ " = 1'-0"

464 SQ. FT.



THE HIGGINS

THREE OAKS COMMUNITIES