

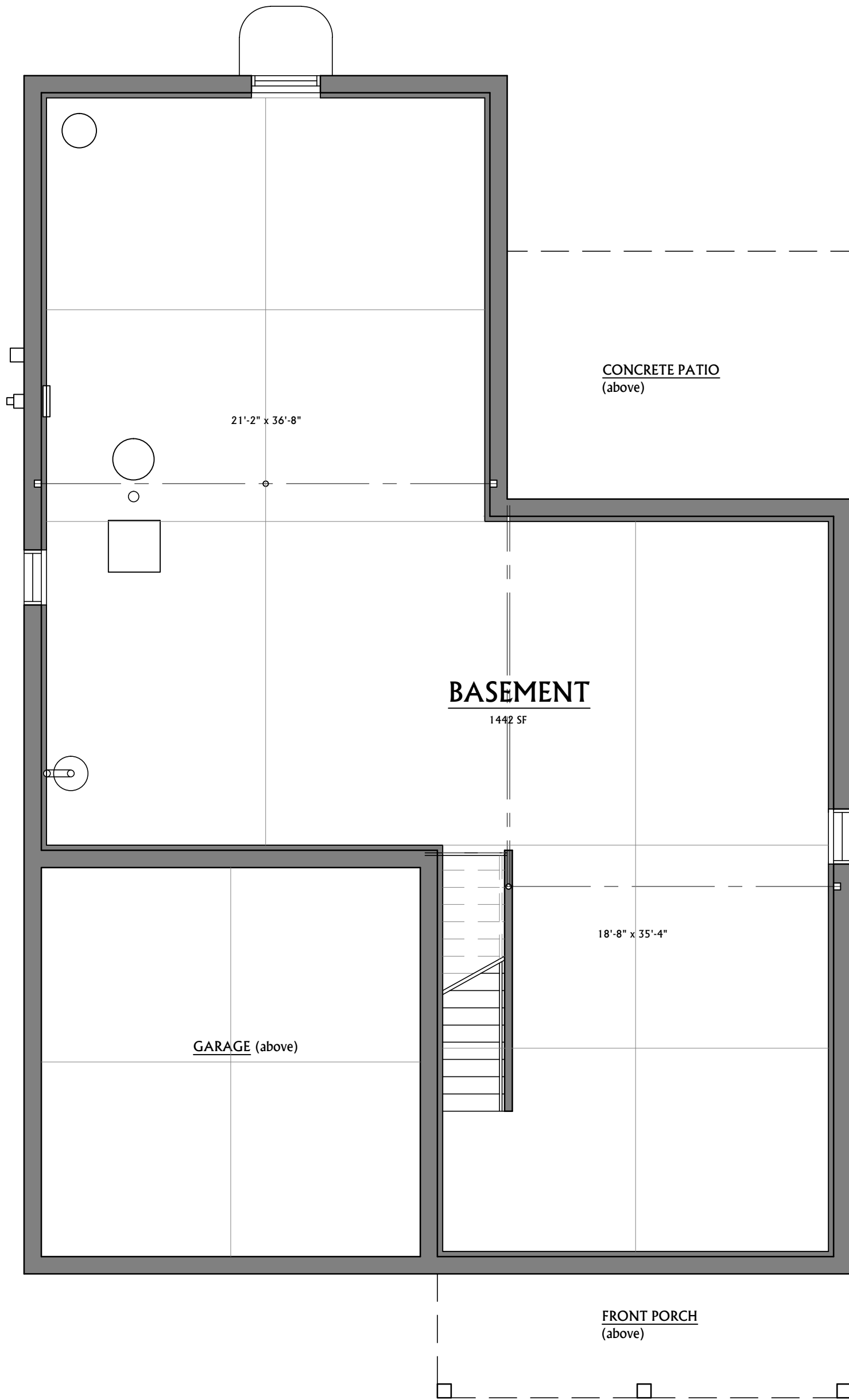
FIRST FLOOR

SCALE: $\frac{3}{16}$ " = 1'-0"

1589 SQ. FT.



**THE MICHIGAN
THREE OAKS COMMUNITIES**



BASEMENT

SCALE: $\frac{3}{16}'' = 1'-0''$



THE MICHIGAN

THREE OAKS COMMUNITIES